

The Gripple Plus Anchor Kit (GPAK) is supplied as a ready-to-use kit comprising a pre-cut, fused length of cable rope and a Gripple tensioner.

FEATURES / BENEFITS

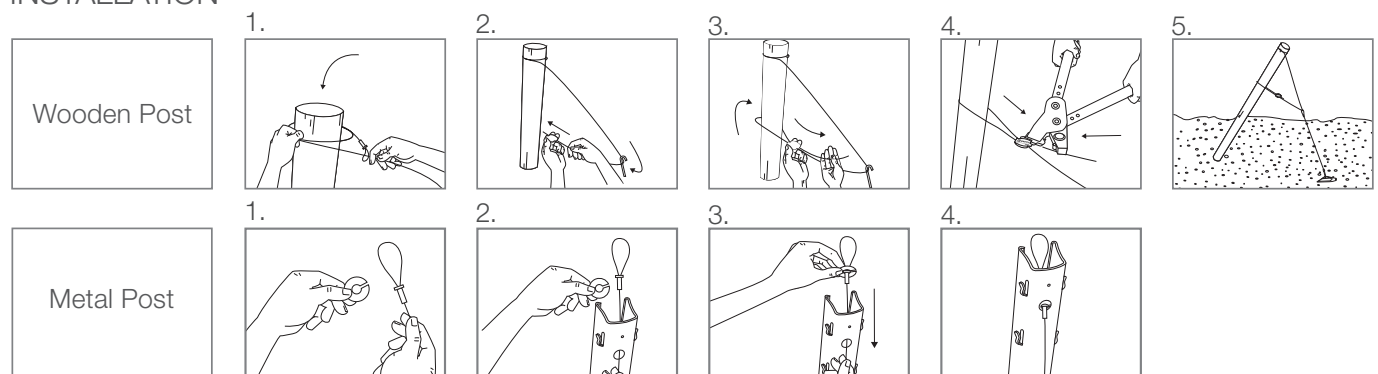
- Suitable for wooden or metal post bracing
- Dual brace points for even load transfer
- Easily re-tensioned year-after-year
- Manufactured with zinc aluminum cable rope for corrosion resistance
- Consistent, professional finish



SPECIFICATION

Product	Cable Diameter	Cable Length	Maximum Working Load
GPAK 3	3.00 mm / 1/8 in.	2.5 m / 3/32 in.	400 kg / 881 lbs
	3.00 mm / 1/8 in.	3.5 m / 9/64 in.	400 kg / 881 lbs
	3.00 mm / 1/8 in.	4.5 m	400 kg / 881 lbs
GPAK 4	4.00 mm / 5/32 in.	5.0 m / 11/64 in.	600 kg / 1322 lbs

INSTALLATION



TIPS

- Combine with an Anchor for a complete anchoring solution that's simple and fast to install.
- For video installation instructions visit our YouTube channel GrippleTV



PI-GPAK-T-US

www.gripple.com

Gripple's policy is one of continuous development and innovation. We therefore reserve the right to alter specifications, etc. without notice.

Gripple Inc | 1611 Emily Lane | Aurora, IL 60545 | USA
Tel +1 866 474 7753 Fax +1 800 654 0689 email grippleinc@gripple.com