

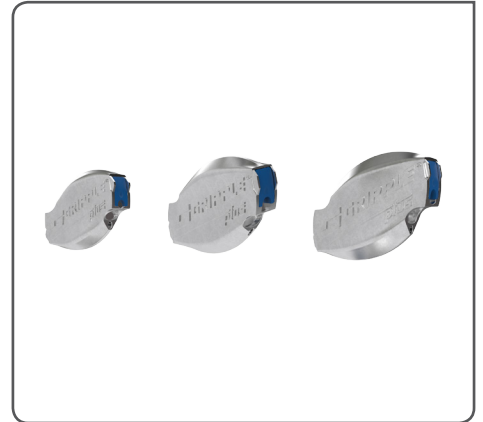
Gripple Plus Range (Fencing)



The Gripple Plus range of wire joiners and tensioners is suitable for all fencing applications.

FEATURES / BENEFITS

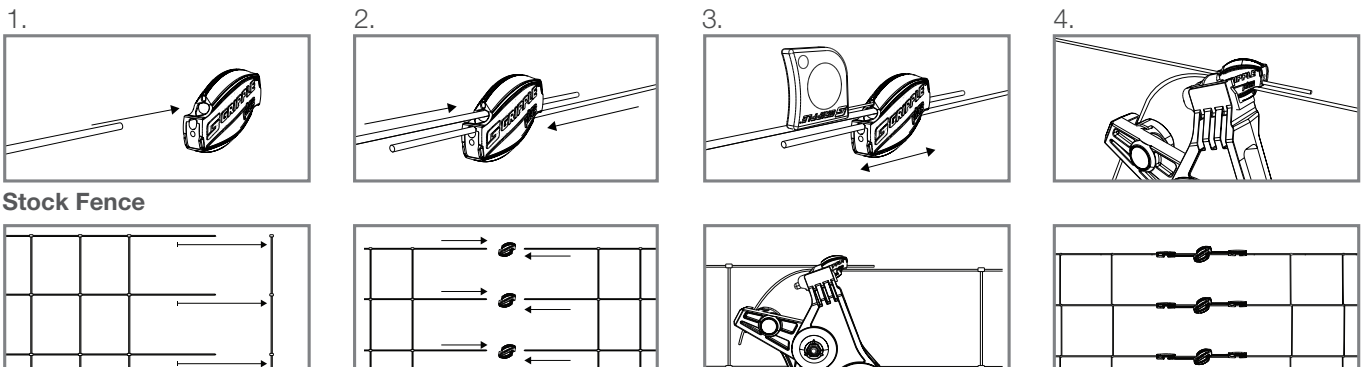
- Join and tension in one
- Eliminates tying and knotting wires, reducing installation time
- Ideal for use on high tensile and mild steel wire
- Designed for high load holding and corrosion resistance
- Easily re-tensioned year-after-year



SPECIFICATION

Product	Wire Type	Wire Range	Standard Wire Gauge	Recommended Working Load
Gripple Plus Small	Plain, Field, Electric	1.40 mm - 2.20 mm	17-13 ga	660 lbs
Gripple Plus Medium	Plain, Field, Electric, High tensile barbed	2.00 mm - 3.25 mm	14-10 ga and 15 1/2 ga	880 lbs
Gripple Plus Large	Plain, Field, Electric	3.20 mm - 4.20 mm	10 - 7½ ga	1,320 lbs

INSTALLATION



TIPS

- Reposition before applying tension using a Setting Key
- Remove sufficient verticals prior to installation
- Apply and re-apply tension with a tensioning tool
- Trim excess wire with Wire Cutters, leave at least 3 in tail wire to enable re-tensioning



PI-GRIPPLEPLUS-F-US

www.gripple.com

Gripple's policy is one of continuous development and innovation. We therefore reserve the right to alter specifications, etc. without notice.

Gripple Inc. | 1611 Emily Lane | Aurora IL 60502
Tel 630 406 0600 Fax 630 406 0664 email grippleinc@gripple.com